



DELTA X GLOBAL . COM

ENTERPRISE PRODUCT DATA  
MANAGEMENT SOLUTIONS

# Introducing the Delta-X Suite

## Digital Transformation

Mobile-interactive campaigns and technologies, such as RFID, NFC, QR codes and digital print, opened new opportunities for brand owners to engage with their consumers but negatively impacted manufacturing operational efficiencies and prevented scaling.

## Delta-X End-to-End Solutions

A secure, scalable, field-proven suite of software applications, combined with manufacturer-deployable hardware, enables users to create, embed, manage and connect personalized product and packaging data.

Addressing the security and operational efficiency challenges, Delta-X allows brand owners, converters and packaging companies in the distribution and value stream to segue into the digital future.



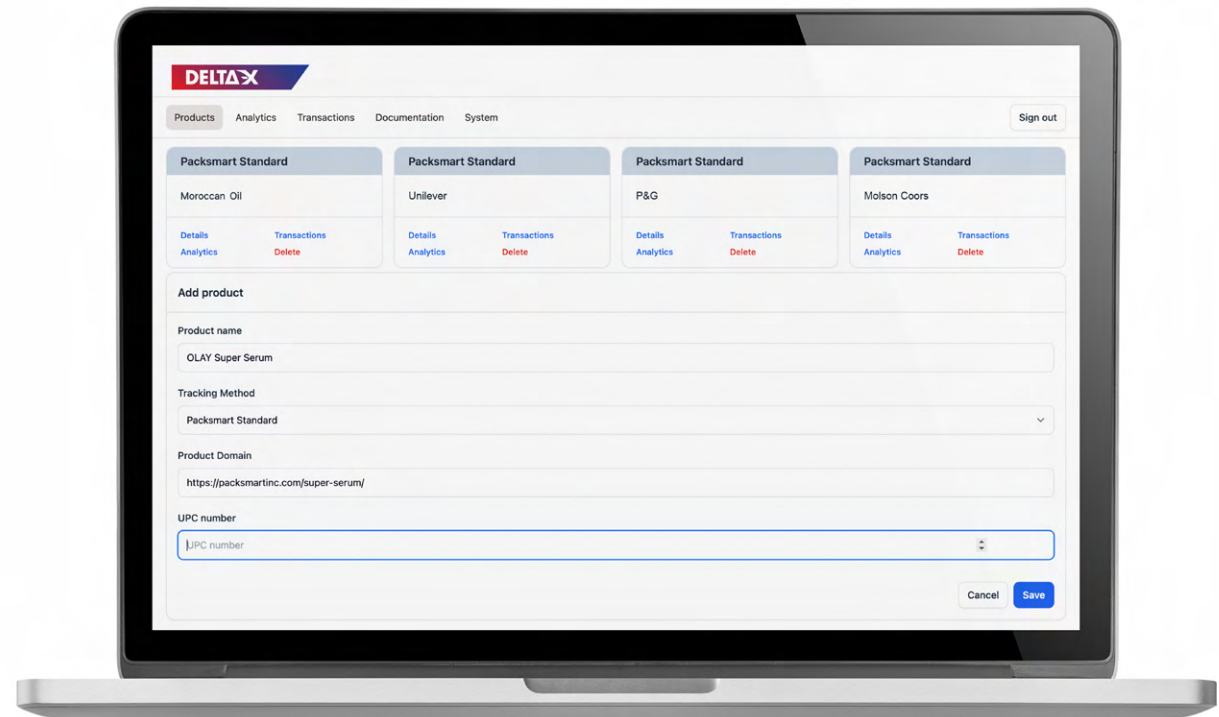
# How Delta-X Works

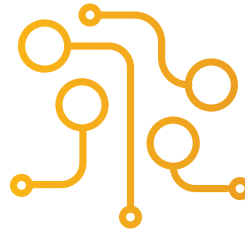




# CREATOR

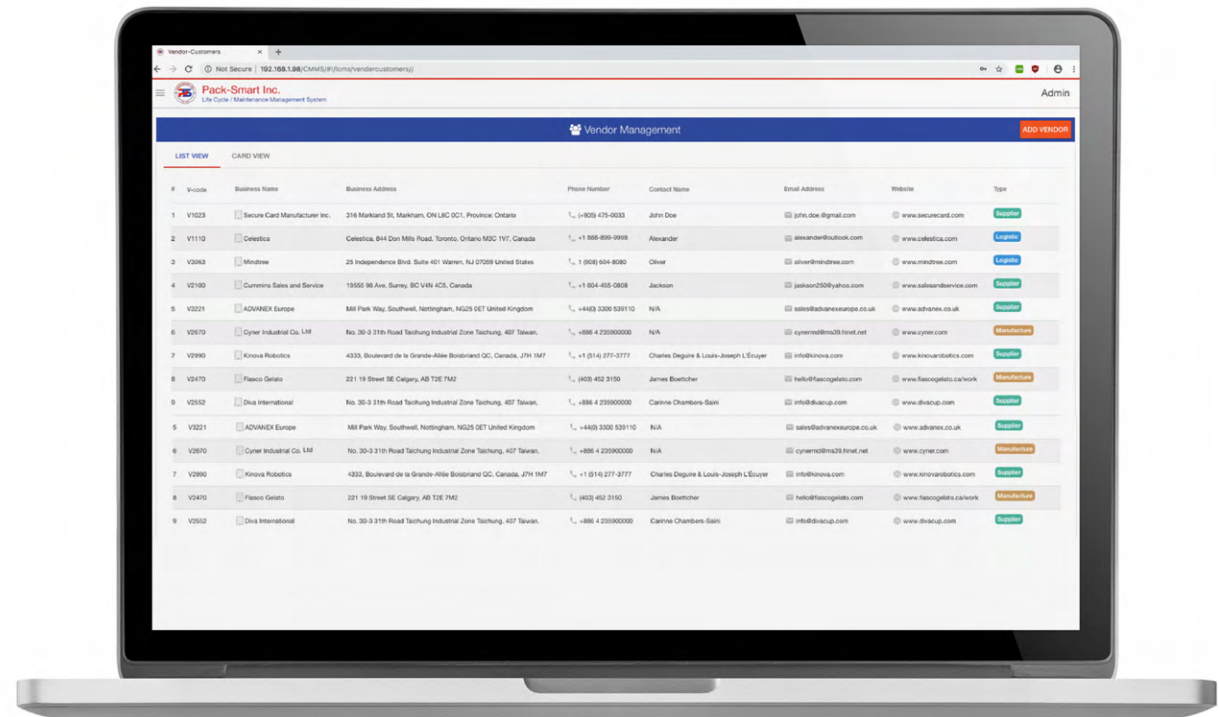
**Delta-X™ Creator** is a job management and resource allocation tool that facilitates the distribution of serialized data across multiple L3 vendors with role-based access. It serves as a central hub for procurement and planners to manage job orders among vendors, suppliers, and third-party converters, ensuring efficient data allocation and automated actions.





# ALLOCATOR

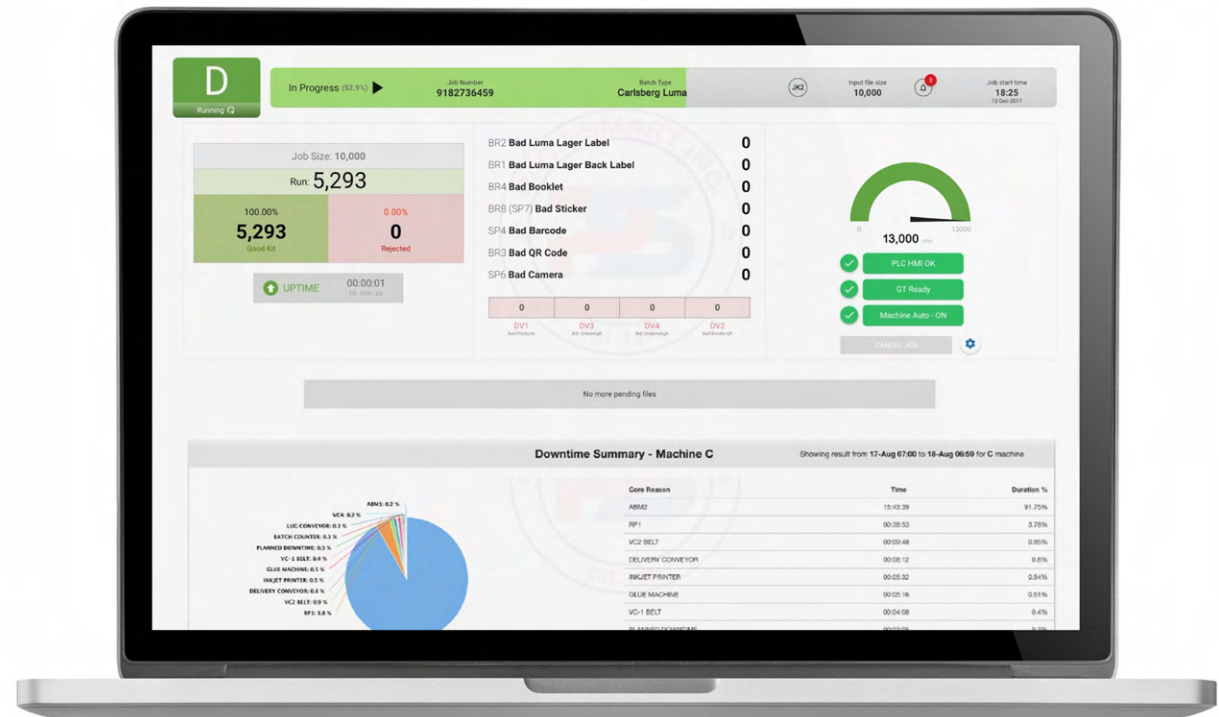
**Delta-X™ Allocator** is designed to dissect campaign data effectively, suggesting optimal allocation strategies based on business logic, vendor capacities, and geospatial preferences. It integrates seamlessly with ERP, MES, EPCIS systems, and major RDBMS, providing a web-based application for global access.





# SITE CENTRAL

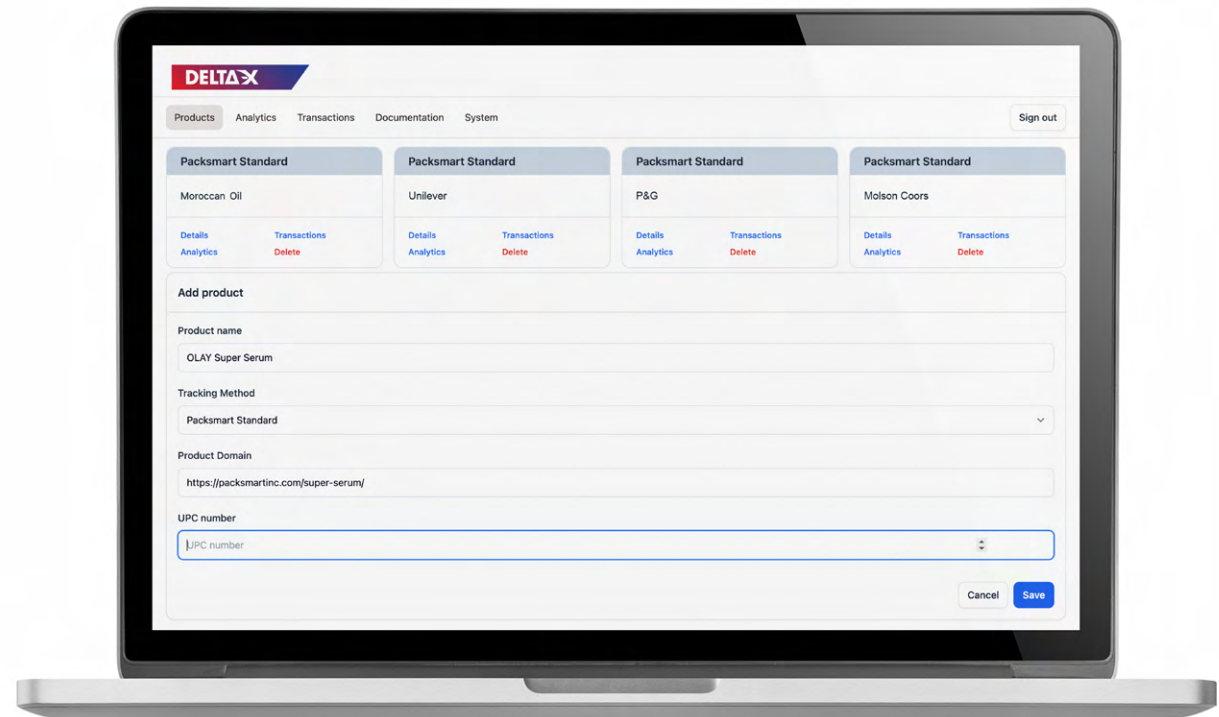
**Delta-X™ SiteCentral** is an all-in-one production site management solution that provides a plant-based line management hub to assign jobs, monitor production, collect data, and maintain equipment. It offers real-time data collection from multiple locations and machines, providing a graphical overview of onsite assets, production performance, and maintenance.





# TRACKER

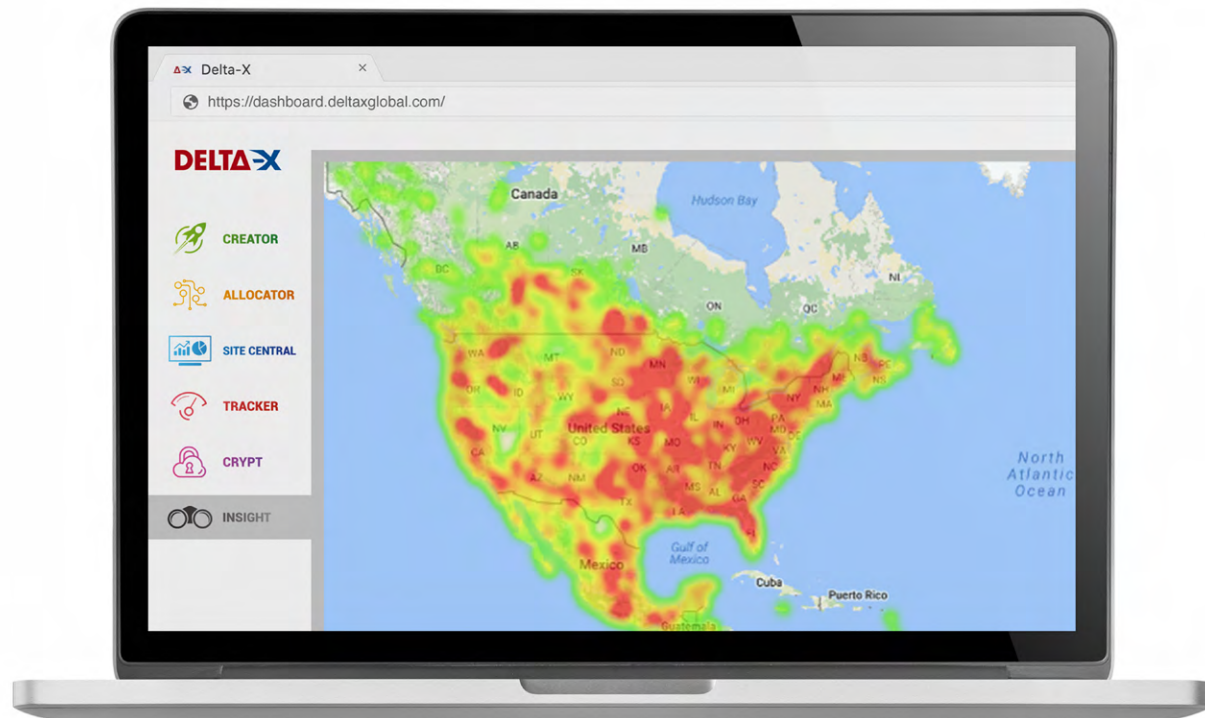
**Delta-X™ Tracker** is a real-time product track and trace solution offering variable data embedding, tracking, validating, and reporting with unprecedented speed and capacity. It's a hybrid solution combining software and hardware to provide unprecedented track-and-trace functionality in the industry.





# INSIGHT

**Delta-X™ Insight** is a campaign analytics portal that delivers real-time interactive experiences, bringing customers closer to brands. It provides real-time, web-based analytic tools to measure campaign success and consumer engagement, predicting consumer behavior and trends to drive smarter and faster business decisions.







# PACK-SMART INC.

ENGINEERING THE IMPOSSIBLE

With two decades of experience, 2000 installations worldwide and playing a key role in over 90 new product launches, Pack-Smart Inc. has earned the reputation of a global leader in packaging automation and digital transformation at unprecedented performance levels.

11-9000 Keele St., Concord, Ontario L4K 0B3, Canada

+1 905 760 0077

[www.packsmartinc.com](http://www.packsmartinc.com)

