



t +1 (416) 744-7545

f +1 (416) 744-9390

w [www.packsmartinc.com](http://www.packsmartinc.com)

e [info@packsmartinc.com](mailto:info@packsmartinc.com)

## 2D/3D Verification System

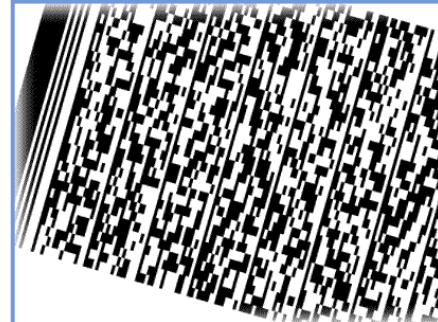
The IVC-2D camera can not only check geometries, but also simultaneously detect and read figures, letters and bar codes, e.g. sell-by dates for food or batch numbers on pharmaceutical packages.

The camera system thus becomes a complete solution for inspecting packaging and its printing at the same time.

Top performance to meet production demands of tomorrow  
A powerful megahertz processor, optimized pixel processing in FPGA and advanced machine vision tools ensures that you never fail to inspect the object in time, even in the highest production speed.

Remote monitoring and statistics via Ethernet, impress your customer's production manager by letting him supervise the production from his office. Just connect the local network cable to the camera and it is all there!

Instant product change over and short downtime during change over from product A to product B is an absolute necessity in optimized production of today. IVC-2D will load and start one of up to 100 preloaded inspection programs instantly on receiving a signal from a PLC or control



### Standard Features

- Industrial Ethernet
- Direct Light Switch interfaces
- Integrated illumination control
- Flexible with many image analysis tools

### Specifications

- 640x480 b/w sensor
- 1024x768 b/w sensor
- 30 fps
- 10/100 Fast Ethernet Connectivity
- RS485 Serial Connectivity
- 4 Program control inputs
- Trigger Input
- 3 Program control outputs
- M12 Industrial Connectors



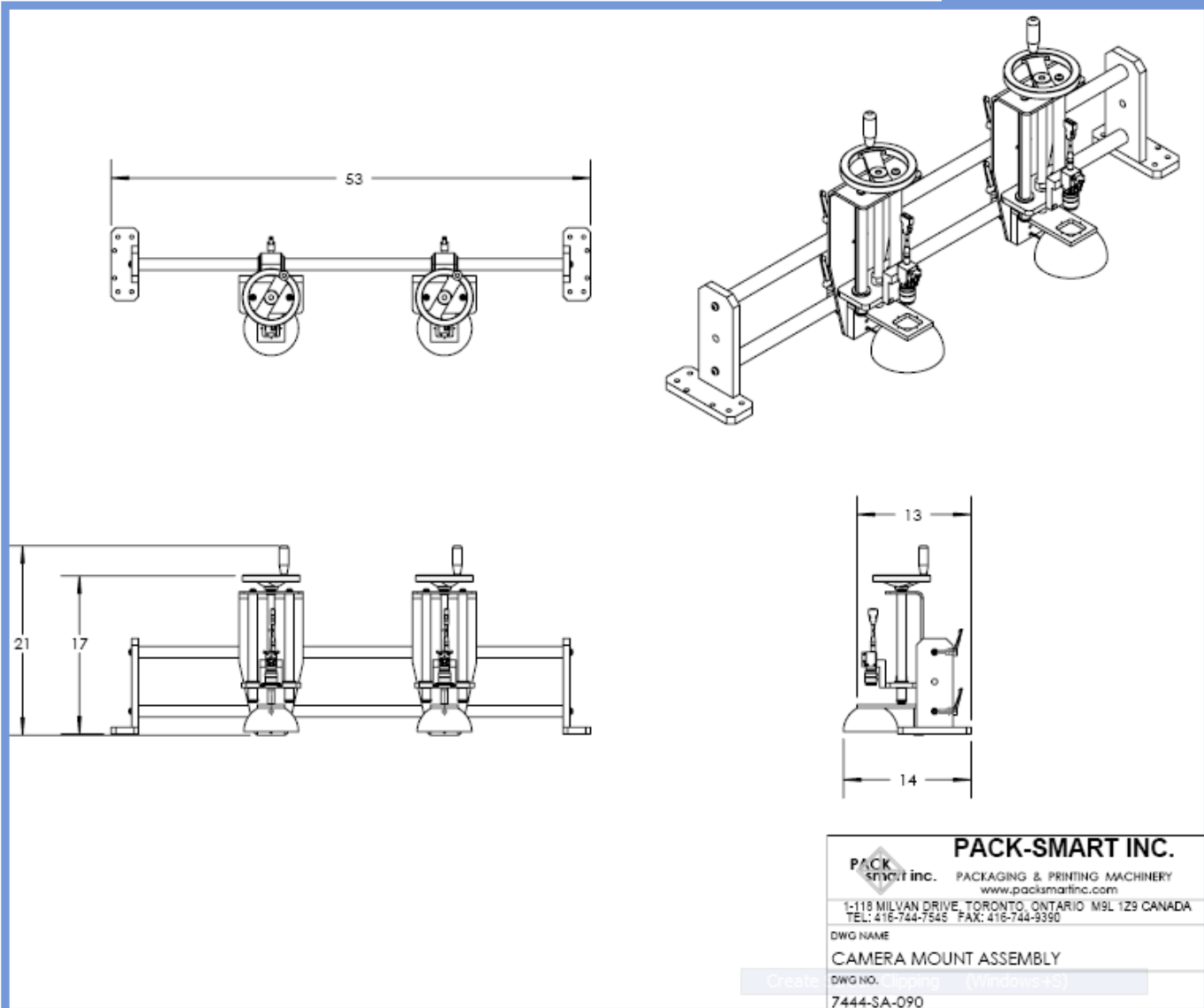
t +1 (416) 744-7545

f +1 (416) 744-9390

w [www.packsmartinc.com](http://www.packsmartinc.com)

e [info@packsmartinc.com](mailto:info@packsmartinc.com)

# Verification System



	<b>PACK-SMART INC.</b>
PACK smart inc.	PACKAGING & PRINTING MACHINERY
	<a href="http://www.packsmartinc.com">www.packsmartinc.com</a>
1-118 MILVAN DRIVE, TORONTO, ONTARIO M9L 1Z9 CANADA	
TEL: 416-744-7545 FAX: 416-744-9390	
DWG NAME	
CAMERA MOUNT ASSEMBLY	
DWG NO. Clipping (Windows+5)	
7444-SA-090	