



t +1 (416) 744-7545

f +1 (416) 744-9390

w www.packsmartinc.com

e info@packsmartinc.com

Friction Feeder

Pack-Smart feeders are notably rugged paper feeding systems. Solid steel construction ensures stability and high performance even in the toughest environments and speeds up to 600 products per minute. Our feeders are capable of handling the lightest paper and are equally at home when dealing with the heavy stock when called upon.

Employed in a spectrum of converting markets are generally utilized for host products feeding applications. A number of sheet registration modules are available to satisfy our client needs.

Noted for its quick change over features, the **FF Series** is also capable of feeding products in up to 4 continuous streams. An operator friendly unit, the **FF Series** is an ideal feeder when product tracking/monitoring may be required for pattern gluing or variable image requirements.

FF Series Functions

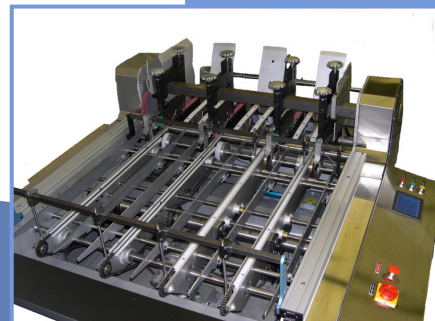
The **FF Series** is a feeding system designed for higher speeds that demand equal spacing between products. This module is often used as a host feeder providing products to the following systems, carton folding, window patch applications, gift card affixing, CD and DVD inserting, sachet affixing and Digipak affixing.

FF Series Standard Features

- High torque brush-less motor
- Operator Interface
- Timed feed feature,
- Dual stream capable
- Self contained dual vacuum system
- Sheet registration module
- Missing sheet detection
- Electronic speed synchronization module
- Ethernet Power link communication
- Mobile frame with swivel casters

Available Sizes: 12" X 24" 20" X 30" 30" X 30" 44" X 36"

Recommended Product Thickness: .005" up too .300"





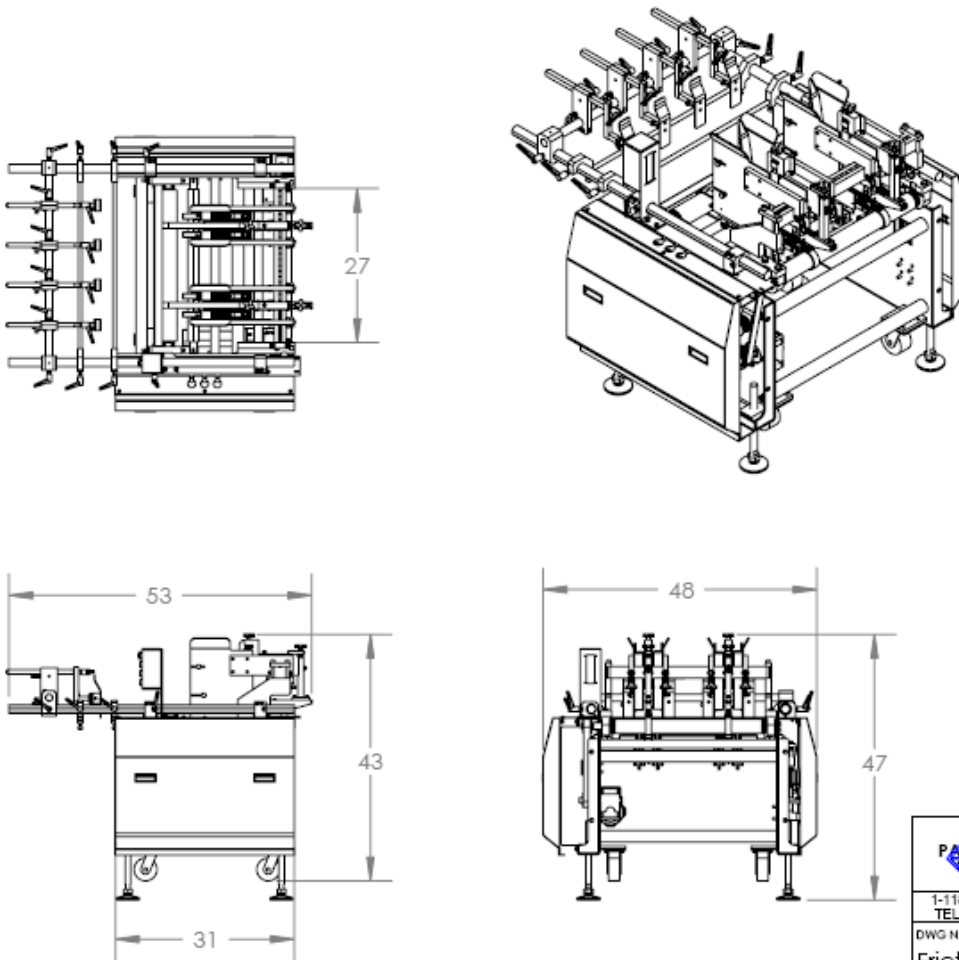
t +1 (416) 744-7545

f +1 (416) 744-9390

w www.packsmartinc.com

e info@packsmartinc.com

Friction Feeder



	PACK-SMART INC.
	PACK smart inc. PACKAGING & PRINTING MACHINERY www.packsmartinc.com
1-118 MILVAN DRIVE, TORONTO, ONTARIO M9L 1Z9 CANADA TEL: 416-744-7545 FAX: 416-744-9390	
DWG NAME Friction Feeder	
DWG NO. FF-30-02	